

NEWSLETTER



THE FIRST WEEK BACK



Hi all!

That's the first week back done already - can you believe it?

Here at school we hope you all had a lovely half term break and made some wonderful memories, had a well-deserved rest and enjoyed each others company, or enjoyed whatever else you may have gotten up to!

It was lovely to see the children come in smiling on Tuesday. We did notice some bright smiles from the families too!

MR WALLIS' MOMENTS

Starting at a new school is hard, as anyone who has ever done this, as a pupil, parent or staff member would know. One of the hardest things is learning everyone's names. Now I have to hold my hands up and admit I am not best at remembering names normally! Having worked in classes for most of my adult life I can do this much quicker with children, but adults names take a bit longer. I have realised that I keep renaming people as celebrities and thought I'd share the names of the famous faces/ characters I have inadvertently been calling people.

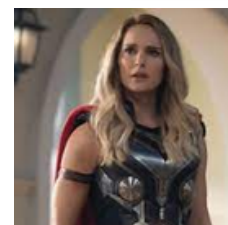
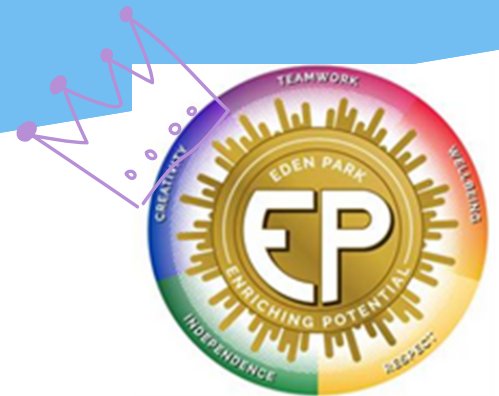
Safe to say when I realised my mistakes I was a tad embarrassed! Luckily the staff have found it amusing and taken it in good stead!

3RD NOVEMBER 2023

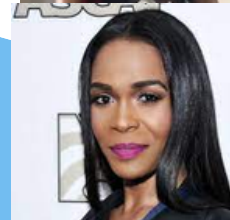
As many of you will have noticed, the gate was fixed! Trust me when I say we are delighted about this finally being done, and also over the break we have had some new fire doors fitted internally in the junior departments.

After leaving our lost property out last term on multiple occasions for people to come and check through, we are now donating anything we have had in storage for a while to local charities. We have searched through the name tags on all the clothes to try and reunite anyone with lost property. We did manage to reunite someone with a jumper from 3 years ago!

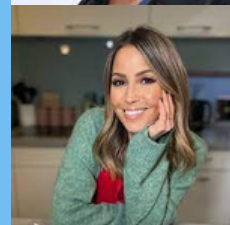
Thanks for a great first week back and we look forward to seeing you next week.



Jane Foster



Michelle Williams



Rachel Stevens

LANTERNS, LIGHTS AND 'LUMINATIONS

FRIDAY 24TH NOVEMBER - BRIXHAM
HARBOUR

A small group of children from Stagestruck here in school, will be singing a few songs at this upcoming event! We would love to see you all there to support them. Singing starts at 3.45. We know they will be fabulous and we look forward to seeing you there to cheer them on.

FACEBOOK

@edenparkprimary



INSTAGRAM

@edenpark_primary



With the weather being a little more unpredictable, can families please ensure children have coats in school, so we can still venture out even if a little drizzly. Thank you.

KEY DATES



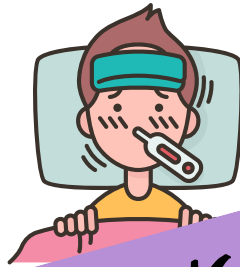
Friday 3rd November 2023	PTA Halloween disco (£2 per ticket) 3:15 - 4:00 Reception and Key Stage 1 4:15 - 5:00 Key Stage 2 Fancy dress optional
W.B. 13th November 2023	Anti-bullying week
Friday 17th November 2023	Children in Need - Spotacular (wear spots) - donations
W.B. 20th November 2023	Bikeability
Friday 24th November 2023	Non-uniform day (donations for tombola)
Friday 24th November 2023 at 3:45	Lanterns, Lights and Luminations - Stagestruck Performance (Brixham Harbor)
Wednesday 29th November 2023 at 14:15	Butterflies - Show outcome
Thursday 30th November 2023 at 14:15	Bumblebees - Show outcome
Monday 4th December 2023	Rudolph Run
Monday 4th December 2023 at 14:45	Year 4 - Romans outcome
Tuesday 5th December	Winter Fayre (after school)
Monday 11th December 2023 at 14:00	Frogs Christmas outcome
Tuesday 12th December 2023	Church Service
Tuesday 12th December 2023 at 14:00	Tadpoles Christmas outcome
Tuesday 12th December 2023 from 17:00-17:30	Year 5 Star-gazing Evening
Wednesday 13th December 2023	Christmas jumper day and Christmas lunch
Friday 15th December 2023 at 14:15	Reception Nativity performance
Tuesday 19th December 2023	Last day of term
Wednesday 3rd January 2024	First day back



PROSPECTIVE FOUNDATION TOURS

We have many tour dates for those considering joining us in Reception next year. If you know of anyone in the area with children of school age in September, please direct them to our Facebook page and tour dates. We would love to see them and hopefully welcome them to the Eden Park family.

If your child is absent, please ring the school office before 8.30am to let us know.



ABSENCE

CAR PARK



A polite reminder that the car park is not for general use during drop-off and collection. It is only to be used by those who have had a conversation with a member of SLT and obtained permission. In the future we will be handing out badges to those who have permission from the school. We like to limit the car park to improve the safety of all at these busy times.

ARBOR PARENT PORTAL



This is our main method of communication going forward. Please ensure details are correct and you are able to log in.

Please ensure you have reviewed your permissions - without these your children will not be able to be used in photographs such as our celebrations or those taken on trips - it would be a shame for them to miss out.

Yes! Brixham

Collect from our office
The Edge, Bolton Street Brixham

Donations needed!

Brixham
School uniform bank



Free to collect

Monday 10 - 4.30

Tuesday 10-4.30

Wednesday 12-4.30

Thursday 10-4.30

Friday 10 - 4.30

Youth Enquiry Service Brixham Limited is a registered Charity - Charity Registration No. 1072028
Registered Office: The Edge, Bolton Street, Brixham, TQ5 9DH - Registered in England No. 3648122
info@yesbrixham.org.uk 01803 851414 www.bxyes.org.uk www.facebook.com/YESBrixham



Familyhub

TORBAY

For any advice or support please visit:

Family Hub (torbayfamilyhub.org.uk)

There are a range of services and support avenues to explore all for free! See the website for more information. This is across the Torbay area, with many services offering local hubs right here in Brixham.



SOCKTOBER



GET YOUR COMFIEST CLEAN
DRY MENS SOCKS OUT!



SOCKTOBER is an international effort to provide socks to the homeless. A simple pair of CLEAN, DRY socks can make the world of difference to those who are sleeping rough. Please donate to help make someones life that little bit warmer.

socks will be
distributed by **PATH Torbay**



07763398238 #socktober

**OUR COLLECTION
BOX IS IN THE MAIN
ENTRANCE**