



NEWSLETTER



8TH DECEMBER 2023

WEEK 6



What a week!

We have had the Rudolph Run, the Winter Fayre and the Roman Outcome on top of all the wonderful learning that already takes place, day-in day-out here at Eden Park Primary and Nursery School.

It was great to meet more families during the recent events and it was lovely to see the Winter Fayre so well supported, both in terms of donations and turnout. A highlight for me was the staff baby photos, but I am sure many of the children would list soaking the Headteacher with a wet sponge as a highlight - not sure why!?! It was all in good fun.

Next week is our last full week, but the school is still open on Monday 18th and Tuesday 19th when we look forward to seeing all the children. On the 19th especially we have the Online Pantomime funded by the PTA - personally, I can't wait!

Have a great weekend all.

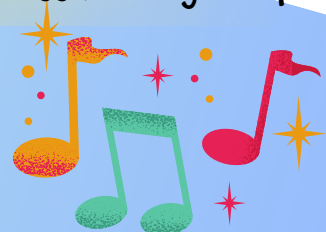
Mr Wallis

STAGESTRUCK - ON YOUR DEVICE!

As those of you who were able to come to Lanterns, Lights and 'Luminations' will know, the children sang a beautiful song called 'Love Reborn'. The title may not be familiar to you as it has been composed by our very own Miss Bovington! The children did such a fantastic job I asked for it to be recorded so I could put it on our website. You can now listen to it anytime you like! It can be found on the 'Homepage' above the text, and on the 'Parents' page also above the text.

If you haven't heard it already you are in for a treat. It genuinely gives me goosebumps each time as they do such a great job. Thank you to Miss Bovington for the composition and to the children for singing it so beautifully.

<https://www.eppsas.org.uk/>



WINTER FAYRE!



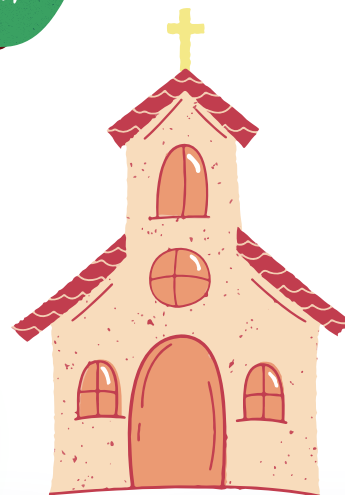
Thanks to Eadie in Frogs for picking our raffle winners.





Christmas Events

CHURCH
SERVICE
12TH DECEMBER



CHRISTMAS LUNCH
13TH DECEMBER

CHRISTMAS
JUMPER DAY
13TH
DECEMBER



Online Pantomime!

On the last day of term for all the children to watch.

Funded by the PTA - Thank You!

RECEPTION LEARNING

This week in wild for Learning the children in Grasshoppers adored making music with nature. We were challenged to find two sticks the length of our forearm. The children did a fantastic job at listening and following instructions. We then gathered around the potting tables to sing and tap out a tune. Well done Grasshoppers!



Rudolph Run!!!





Rudolph Run



Tuesday 5th December

The Rudolph Run for Rowcroft Hospice, was a fantastic success and it was great to see all the children taking part and completing the route. Many staff also took part too to keep morale high and join in the fun.

The children completed laps of the whole school to raise this money and it was well earned. Some children started with energy a plenty then naturally slowed down the pace, others started slow and kept speeding up, whereas some children maintained a slow and steady pace (although still quicker than me!). Well done to all for all your hard work and thank you to all who sponsored the children. We will let you know how much was raised in due time.



It's a boy!

Mr Dixon and his wife have welcomed little Reggie into their family. He was born on the 29th November and both he and mum are doing well. Mr Dixon reports Reggie has settled in beautifully to the family.

I am sure you all will want to send your congratulations to Mr Dixon and his family when you next see him.





PROSPECTIVE FOUNDATION TOURS

We would love to meet those considering joining us in Reception next year. If you know of anyone in the area with children of school age in September, please direct them to our Facebook page and encourage them to contact us for a visit. We would love to see them and hopefully welcome them to the Eden Park family.



A welcoming school community which provides the opportunity for every child to thrive within a school with a strong, **GOOD** Ofsted.

DON'T MISS OUT!

School spaces for your child available for September 2024 Nursery spaces available now!

CALL **01803 854011** EMAIL **ADMIN@EPPSA.ORG.UK**



CLUB COLLECTION

Pick up from clubs is only through the main pedestrian gate by the car gate. All other gates are closed after school.



ABSENCE

If your child is absent, please ring the school office before 8.30am to let us know.

ATTENDANCE



As you know attendance remains a top priority for us all. Below you will find this week's attendance figures. We understand winter illnesses are going around at the moment and small odd occasions of illness are unavoidable, but please ensure where possible your child is in school.

Class	Percentage Attendance
Ladybirds	93.64%
Grasshoppers	93.75%
Bumblebees	91.15%
Butterflies	93.85%
Caterpillars	85.19%
Dragonflies	94.35%
Pufferfish	95.71%
Seahorses	93.21%
Dolphins	94.18%
Starfish	90.43%
Sharks	89.31%
Stingrays	94.67%
Swordfish	88.26%
Lobsters	91.11%

KEY DATES



Monday 11th December 2023 at 14:00	Frogs Christmas outcome
Tuesday 12th December 2023	Church Service
Tuesday 12th December 2023 at 14:00	Tadpoles Christmas outcome
Tuesday 12th December 2023 from 17:00-17:30	Year 5 Star-gazing Evening
Wednesday 13th December 2023	Christmas jumper day and Christmas lunch
Friday 15th December 2023 at 14:15	Reception Nativity performance
Tuesday 19th December 2023	Last day of term
Wednesday 3rd January 2024	First day back

YES Brixham FoodBank & Community Fridge

YES Brixham runs an independent food bank. Food parcels are available to collect five days a week from 10.30-4.30pm

In addition to our food bank we have also launched a self serve community fridge and larder which is free to access and open to all throughout our opening hours.

Being an independant foodbank we rely on donations from the community. All items are very gratefully received however if you would like to know what we are most in need of then please contact us

at info@yesbrixham.org.uk
or 01803 851414



Monday Brixham Foodbank at 14 Brewery Lane from 2pm to 4pm

Wednesday Brixham Foodbank at 14 Brewery Lane from 2pm to 4pm and

Friday Brixham Foodbank at 14 Brewery lane from 2pm to 4pm

Contact phone number – 07873 164211

GET INVOLVED!

There are many ways you can be involved with the school if you'd like to be more hands on!.

School are always on the lookout for anyone who might be interested in becoming a governor now or in the future.

or



Do you want to be a part of the fundraising efforts of the PTA who aim to help improve the experiences of all children? This could include becoming a member and helping organise and run events that enhance the already great offer for the pupils here at Eden Park Primary and Nursery School.



FACEBOOK
@edenparkprimary



INSTAGRAM
@edenpark_primary

If you are interested in either, please leave your name at the main office and we will be in touch.

ARBOR PARENT PORTAL



Familyhub
TORBAY

This is our main method of communication going forward. Please ensure details are correct and you are able to log in.

Please ensure you have reviewed your permissions - without these your children will not be able to be used in photographs such as our celebrations or those taken on trips - it would be a shame for them to miss out.

Yes! Brixham
Collect from our office
The Edge, Bolton Street Brixham
Donations needed!
Brixham
School uniform bank
Free to collect
Monday 10 - 4.30
Tuesday 10-4.30
Wednesday 12-4.30
Thursday 10-4.30
Friday 10 - 4.30
Youth Enquiry Service Brixham Limited is a registered Charity • Charity Registration No. 1077203
Registered Office: The Edge, Bolton Street, Brixham, TQ2 9SH • Registered in England No. 3648113
info@yesbrixham.org.uk 01302 851414 www.yesbrixham.org.uk www.facebook.com/YESbrixham

For any advice or support please visit:

Family Hub (torbayfamilyhub.org.uk)

There are a range of services and support avenues to explore all for free! See the website for more information. This is across the Torbay area, with many services offering local hubs right here in Brixham.

Holiday Activity and Food Programme

Find out about how we make sure children have access to food and activities over the school holidays.



<https://www.torbay.gov.uk/children-and-families/early-years/healthy-holidays/>

HAF is a national scheme being run by the council in the Bay to ensure that children have access to food and activities over the school holiday periods. They will be delivering at least four hours per day for four days per week, one week in the Easter holiday period, four weeks in the summer holiday period and one week in the Christmas holiday period.

The primary aims of the programme are to reduce social isolation and 'holiday hunger' for children aged 5 to 16 years who are in receipt of benefits based free school meals.