

NEWSLETTER

15TH DECEMBER 2023

WEEK 7



That's the final full week done!

What a lot has been crammed in! We have had the Year 5 Stargazing outcome, where we got to look at the stars and find constellations and planets using technology to aid us, there were also the outcomes for Frogs and Tadpoles, and the Nativity performed by our Reception classes. All the children have been phenomenal during performances, and for those of you who were able to attend the Church Services this week on Tuesday, you could really see how hard each class has been working on their own components to make the whole service a success - they were truly the epitome of teamwork, and made us proud!

Christmas Jumper Day and the Christmas Lunch were a roaring success as you will be able to see from a few photos below. Thank you to all the PTA members and other parent volunteers who came in early to help set up the hall. It was a marvellous atmosphere and such a generous use of your time. A big thank you as well to the Aspens team in the kitchen for the food - it was lovely.

With only 2 days left to go next week, you may be wondering what more we can fit in! Well we have the online pantomime for all the children on the Tuesday (generously provided by the PTA) and we are also allowing the children on that day to bring in any games from home they wish to play with their friends. We only ask that they are not electronic and anything that is sent in is done so with the understanding that, whilst we will of course do our best to look after them, we cannot be held responsible for any accidents. Please do not send in anything of sentimental value. Also a polite reminder that make up is not part of the school uniform so should not be worn by children in school.

As this is the last newsletter of the calendar year, I'd like to take a moment to say thank you to all, I have been made to feel very welcome since starting in September, and have loved meeting families of the school. I genuinely cannot wait to meet more of you in the coming year. I wish all who celebrate it a Merry Christmas, and to those who don't I wish you a lovely break with your family when we get there.

We look forward to seeing the children next Monday and Tuesday, and in case I don't see before, have a Happy New Year. In the words of one child this week - Autumn Term Complete!
Mr Wallis




Christmas Events




Online Pantomime!

On the last day of term for all the children to watch.

Funded by the PTA - Thank You!



He's behind
you!!!!



Oh no he isn't!
Oh yes he is!

CHRISTMAS EVENTS!

RUDOLPH RUN

Thanks to your contributions we raised

£874

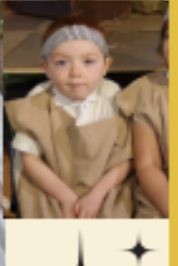


CHRISTMAS
JUMPER DAY &
CHRISTMAS
LUNCH



Church Service!







PROSPECTIVE FOUNDATION TOURS

We would love to meet those considering joining us in Reception next year. If you know of anyone in the area with children of school age in September, please direct them to our Facebook page and encourage them to contact us for a visit. We would love to see them and hopefully welcome them to the Eden Park family.



A welcoming school community which provides the opportunity for every child to thrive within a school with a strong, **GOOD** Ofsted.

DON'T MISS OUT!

School spaces for your child
available for September 2024

Nursery spaces
available now!

CALL 01803 854011 EMAIL ADMIN@EPPSA.ORG.UK



CLUB COLLECTION

Pick up from clubs is only through the main pedestrian gate by the car gate. All other gates are closed after school.



ABSENCE

If your child is absent, please ring the school office before 8.30am to let us know.

ATTENDANCE



As you know attendance remains a top priority for us all. Below you will find this week's attendance figures. We understand winter illnesses are going around at the moment and small odd occasions of illness are unavoidable, but please ensure where possible your child is in school.

Class	Percentage Attendance
Ladybirds	93.43%
Grasshoppers	94.9%
Bumblebees	95.73%
Butterflies	89.74%
Caterpillars	86.8%
Dragonflies	98.07%
Pufferfish	94.84%
Seahorses	97.31%
Dolphins	88.89%
Starfish	97.58%
Sharks	93.49%
Stingrays	84%
Swordfish	94.07%
Lobsters	93.42%

KEY DATES



Tuesday 19th December 2023	Last day of term
Wednesday 3rd January 2024	First day back
Thursday 4th January 2024	Year 6 Brixham Trip - Art in Architecture
Wednesday 10th January 2024	Oral Health Checks Year 1 and Reception
Tuesday 16th January 2024	Reception Hospital Trip
Tuesday 23rd January 2024	Reception Fire Station Trip
Wednesday 31st January 2024 9:30-10:15	Year 4 Outcome: Music
Thursday 1st February 2024 14:40-15:05	Year 2 Geography Outcome
Tuesday 6th February 2024 14:00-14:45	Frogs Outcome
Wednesday 7th February 2024 14:00-14:45	Tadpoles Outcome
Wednesday 7th February 2024 14:30-15:15	Year 6 Outcome: Art in Architecture

YES Brixham FoodBank & Community Fridge

YES Brixham runs an independent food bank. Food parcels are available to collect five days a week from 10.30-4.30pm

In addition to our food bank we have also launched a self serve community fridge and larder which is free to access and open to all throughout our opening hours.

Being an independant foodbank we rely on donations from the community. All items are very gratefully received however if you would like to know what we are most in need of then please contact us

at info@yesbrixham.org.uk

or 01803 851414



Monday Brixham Foodbank at 14 Brewery Lane from 2pm to 4pm

Wednesday Brixham Foodbank at 14 Brewery Lane from 2pm to 4pm and

Friday Brixham Foodbank at 14 Brewery lane from 2pm to 4pm

Contact phone number – 07873 164211

ARBOR PARENT PORTAL



This is our main method of communication going forward. Please ensure details are correct and you are able to log in.

Please ensure you have reviewed your permissions - without these your children will not be able to be used in photographs such as our celebrations or those taken on trips - it would be a shame for them to miss out.



Familyhub TORBAY

For any advice or support please visit:

Family Hub (torbayfamilyhub.org.uk)

There are a range of services and support avenues to explore all for free! See the website for more information. This is across the Torbay area, with many services offering local hubs right here in Brixham.

Yes!Brixham
Collect from our office
The Edge, Bolton Street Brixham
Donations needed!

Brixham
School uniform bank

Free to collect

Monday 10 - 4.30
Tuesday 10-4.30
Wednesday 12-4.30
Thursday 10-4.30
Friday 10 - 4.30

Trusts Enquiry Service Brixham Limited is a registered Charity • Charity Registration No. 1072028
Registered Office: The Edge, Bolton Street, Brixham, TQ2 9SH • Registered in England No. 3648112
info.yesbrixham.org.uk 01802 851414 www.yesbrixham.org.uk www.facebook.com/YESbrixham

Holiday Activity and Food Programme

Find out about how we make sure children have access to food and activities over the school holidays.



<https://www.torbay.gov.uk/children-and-families/early-years/healthy-holidays/>

HAF is a national scheme being run by the council in the Bay to ensure that children have access to food and activities over the school holiday periods. They will be delivering at least four hours per day for four days per week, one week in the Easter holiday period, four weeks in the summer holiday period and one week in the Christmas holiday period.

The primary aims of the programme are to reduce social isolation and 'holiday hunger' for children aged 5 to 16 years who are in receipt of benefits based free school meals.