



NEWSLETTER



1ST MARCH 2024

WEEK 2

I don't know where this week has gone!

One minute it is Monday and next thing I know I am writing the weekly newsletter! Not quite sure how that happened.

We have our Celebration Assembly today, and I have just had the privilege of signing lots of certificates. It is genuinely my favourite part of the week, getting to hear about the positives and celebrating the hard work, perseverance and successes.

Much like myself, I am sure you are all enjoying the fact that the day is brighter for longer - it just makes everything seem more positive.

I was lucky to spend a bit more time in the Key Stage 1 building this week, and saw how amazingly the Caterpillars were getting on with their multiplication facts and generating worded problems.

In Starfish, I got to see how brilliantly the children were getting on with understanding new vocabulary. They even managed to act out the word 'jostled', located synonyms in the text and provide definitions! Great stuff.

Here's to a calm weekend so we can be ready to do it all again next week! Have a great weekend all.

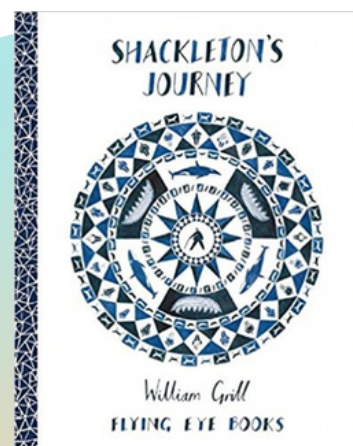
Best Wishes

Mr Wallis

BEST BIT

Rather than just what I have been up to, I wanted to include a piece here on a pupils favourite moment of the week from their classroom. Here is what Olivia Cook in Year 5 had to say:

"My favourite part of the week has been writing as if I were a crew member on Ernest Shackleton's voyage to the Antarctic because I like learning about people who not everyone knows about."



FLOOD WORKS UPDATE

There are no new updates this week. Gate 3 remains closed for the time being. We are hoping to get children up to see the changes once we have drier weather. Thanks for your ongoing patience and support.

POLITE NOTICE



Please be mindful of parking in the local area around pick up and drop off times. We have had a number of complaints recently of people arriving early, waiting in their cars, playing music and leaving their rubbish on the pavements. In some cases, residents have reported not being able to get out of their houses as they have been blocked in. We understand the area can get congested at busy times, and thank you in advance for your cooperation and respect for others in the local community.

FOUNDATION FUN!

The children have started to make their very own story boxes. We had so much fun painting our boxes and thinking of ideas to put in our stories. Each child chose the correct colours that match with their ideas. The children will get to showcase their boxes on Tuesday 26th March when their grown ups come in for a story outcome afternoon. We can't wait to see how the boxes and stories turn out.



INSPIRED INDEPENDENCE

On a walk through Key Stage 1 recently I was stopped by Bonnie, who wanted to show me a poster she had created in her own time around some work they had covered in school on anti-bullying. It was so wonderfully presented I had to share it with you all - it is also on display in the main entrance. Well done Bonnie.



GET INVOLVED!

There are many ways you can be involved with the school if you'd like to be more hands on!.

School are always on the lookout for anyone who might be interested in becoming a governor now or in the future.

Or



Do you want to be a part of the fundraising efforts of the PTA who aim to help improve the experiences of all children? This could include becoming a member and helping organise and run events that enhance the already great offer for the pupils here at Eden Park Primary and Nursery School.

FACEBOOK
@edenparkprimary



INSTAGRAM
@edenpark_primary



If you are interested in either, please leave your name at the main office and we will be in touch.



A welcoming school community which provides the opportunity for every child to thrive within a school with a strong, **GOOD** Ofsted.

DON'T MISS OUT!

School spaces for your child
available for September 2024

Nursery spaces
available now!

CALL **01803 854011** EMAIL **ADMIN@EPPSA.ORG.UK**



IN-YEAR ADMISSIONS

Deadlines for submissions have now passed. We look forward to welcoming our new cohort next year. Should you know of anyone with children in the area who would like to transfer in-year, please put them in contact with the school office who will be more than happy to help.

We are always looking to welcome more into the Eden Park Primary and Nursery family.

ATTENDANCE



As you know attendance remains a top priority for us all. Below you will find this week's attendance figures.

Class	Percentage Attendance
Ladybirds	91.92%
Grasshoppers	90.91%
Bumblebees	94.67%
Butterflies	92.89%
Caterpillars	94.95%
Dragonflies	96.14%
Pufferfish	98.02%
Seahorses	95.63%
Dolphins	95%
Starfish	91.3%
Sharks	94.25%
Stingrays	91.56%
Swordfish	92.59%
Lobsters	93.63%



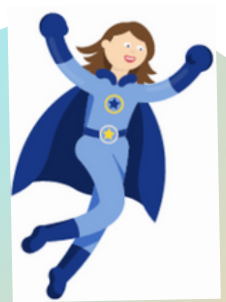
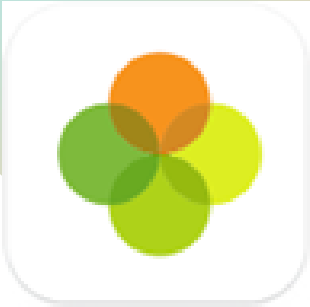
If your child is absent, please ring the school office before 8.30am to let us know.

KEY DATES



Monday 26th February	Year 4 Residential Presentation for Parents 3:30pm
Thursday 29th February	Grasshopper's Brixham Library Visit
Tuesday March 12th	Year 5 History Outcome 2:50
Thursday March 14th	Ladybird's Brixham Library Visit
WB Monday March 18th	Parents' Evenings
Thursday 21st March	Tadpoles Outcome 2:00
Monday 25th March	Frogs Outcome 2:00
Tuesday 26th March - Thursday 28th March	Year 4 Residential
Tuesday 26th March	Reception Outcome 2:15pm
Thursday 28th March	Year 1 Outcome 2:15pm

ARBOR PARENT PORTAL



This is our main method of communication going forward. Please ensure details are correct and you are able to log in. Please ensure you have reviewed your permissions - without these your children will not be able to be used in photographs such as our celebrations or those taken on trips - it would be a shame for them to miss out.

Familyhub

TORBAY

For any advice or support please visit:

Family Hub (torbayfamilyhub.org.uk)

There are a range of services and support avenues to explore all for free! See the website for more information. This is across the Torbay area, with many services offering local hubs right here in Brixham.