



# NEWSLETTER



**26TH APRIL 2024**

**WEEK 2**

I hope everyone has had a great week! The weather has been kind to us for most of the week (I type this now with grey clouds outside the window - fingers crossed they hold off). Sadly the weekend doesn't look so great.

If you are a parent of Year 3 - let me tell you now you are in for a treat! I have had a couple of sneak peeks of their upcoming performance and they are phenomenal. Thank you for all your support in this and to the team and children too. The children were very excited to do a dress rehearsal yesterday and they looked fabulous! The technology was not kind to them in one rehearsal so they sang a song acapella and took the change in their stride. Very impressive Year 3!

Year 6 are gearing up for their SATs that are happening shortly. Thank you to all families for support around this. As we keep saying to the children, you can only do your best and we are proud of you anyway - you are more than a test could ever hope to encapsulate, so please do not worry about them too much.

I have had some lovely art shared with me in my office this week, a very impressive rendition of Van Goughs 'Starry Night', and I got to read some wonderfully written letters from Year 1 on what they would like to see on the playground. Let me tell you there are some very ambitious requests including a waterpark, trampoline, McDonalds and a Costa! It was great to hear from the children and I made sure to write back to each one! Well done Year 1.

Have a great weekend.  
Best Wishes  
Mr Wallis



# FOUNDATION FUN!

This week the children in Reception have been continuing their learning on things that grow. They planted their cress seeds. We will be using the cress later in the term to be a component in our sandwiches. They had fun learning about the best conditions to make the seeds grow. This topic has brought up some fantastic questioning from the children and we can't wait to see where their learning goes.





# FOOTBALL FRENZY

We had our final round of football fixtures yesterday for the girls team in Years 5/6 and...we won the tournament!

The girls played brilliantly and the children were a credit to the school.

Thank you to all who have helped facilitate this, both in school and at home.

The girls showed what it meant to work as a team, and although we would be proud whatever the result, we are very happy for them that they got what they deserved.



## ***POLITE NOTICE***



Please be mindful of parking in the local area around pick up and drop off times. We have had a number of complaints recently of people arriving early, waiting in their cars, playing music and leaving their rubbish on the pavements. In some cases, residents have reported not being able to get out of their houses as they have been blocked in. We understand the area can get congested at busy times, and thank you in advance for your cooperation and respect for others in the local community.



## ***MAKE-UP AND UNIFORM***

Just a polite reminder that students should be in school uniform - the expectations for this are on our website. We have noticed more recently pupils wearing items of non-uniform. If you are struggling with this please speak to someone at school who may be able to help you.

Also, particularly in Year 6, make-up is on the rise. Make-up is not part of the school uniform and we appreciate your support in challenging the children with this.



# GET INVOLVED!

There are many ways you can be involved with the school if you'd like to be more hands on!.

School are always on the lookout for anyone who might be interested in becoming a governor now or in the future.

Or



Do you want to be a part of the fundraising efforts of the PTA who aim to help improve the experiences of all children? This could include becoming a member and helping organise and run events that enhance the already great offer for the pupils here at Eden Park Primary and Nursery School.

FACEBOOK  
@edenparkprimary



INSTAGRAM  
@edenpark\_primary



If you are interested in either, please leave your name at the main office and we will be in touch.



A welcoming school community which provides the opportunity for every child to thrive within a school with a strong, **GOOD** Ofsted.

# DON'T MISS OUT!

School spaces for your child  
available for September 2024

Nursery spaces  
available now!

CALL **01803 854011** EMAIL **ADMIN@EPPSA.ORG.UK**



## IN-YEAR ADMISSIONS





Deadlines for submissions have now passed. We look forward to welcoming our new cohort next year. Should you know of anyone with children in the area who would like to transfer in-year, please put them in contact with the school office who will be more than happy to help.

We are always looking to welcome more into the Eden Park Primary and Nursery family.

# ATTENDANCE



As you know attendance remains a top priority for us all. Below you will find this week's attendance figures.

Class	Percentage Attendance
Ladybirds	95.45%
Grasshoppers	98.99% 
Bumblebees	93.16%
Butterflies	98.29% 
Caterpillars	97.98% 
Dragonflies	94.69%
Pufferfish	93%
Seahorses	93.87%
Dolphins	92.86%
Starfish	93.94%
Sharks	95.63%
Stingrays	97.6% 
Swordfish	87.04%
Lobsters	89.29%



If your child is absent, please ring the school office before 8.30am to let us know.

# KEY DATES



Monday 15th April 2024	First day back at school
Wednesday 24th April 2024 15:15	Year 6 residential meeting
Wednesday 1st May 2024	PTA Disco
Wednesday 8th May 2024	Brixham Community College in to speak to Year 6
WB 13th May	Key Stage 2 Statutory Assessment Test week (SATS)
Friday 17th May 2024 14:00	Tadpoles Summer 1 Outcome
Tuesday 21st May 2024 14:15	Reception Get Set Grow Outcome
Tuesday 21st May 2024	Year 5 music outcome
Wednesday 22nd May 2024	Frogs Summer 1 Outcome
Wednesday 22nd May 2024 - Friday 24th May 2024	Year 6 residential
Friday 24th May 2024	Last day of term
Monday 27th May 2024 - Friday 31st May 2024	Half term
Monday 3rd June 2024	Non-pupil day (school closed to pupils)
Tuesday 4th June 2024	First day back for pupils
Thursday 13th June 2024	Year 6 visit to Brixham Battery
Tuesday 9th July 2024 17:00	Year 6 show
Wednesday 10th July 2024 09:30	Year 6 show
Thursday 11th July 2024 13:45 and 17:00	Year 6 show
Friday 19th July 2024 09:30	Year 6 leavers assembly
Friday 19th July 2024 14:30	Year 6 leavers BBQ

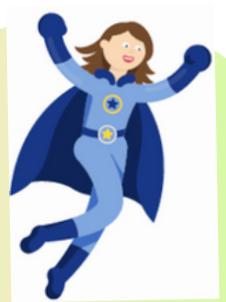


# ARBOR PARENT PORTAL



This is our main method of communication going forward. Please ensure details are correct and you are able to log in.

Please ensure you have reviewed your permissions - without these your children will not be able to be used in photographs such as our celebrations or those taken on trips - it would be a shame for them to miss out.



# Familyhub

## TORBAY

For any advice or support please visit:

Family Hub ([torbayfamilyhub.org.uk](https://torbayfamilyhub.org.uk))

There are a range of services and support avenues to explore all for free! See the website for more information. This is across the Torbay area, with many services offering local hubs right here in Brixham.